



S

i l l y o u p

S

o u p

hat

bat

sun

bun



I'm going to make a Silly Soup,

I'm making soup that's silly!

I'm going to put it in the fridge,


to make it nice and chilly!



You will need:

- A bowl 

- A spoon 

- Your singing voice 

Stir the bowl using your spoon and start to
sing the rhyme;

"I'm going to make a Silly Soup,

I'm making soup that's silly!

I'm going to put it in the fridge,

to make it nice and chilly!"

When you reach the end, pick a picture e.g. a bun.
Then ask the children which picture sounds the
same as 'bun'. Select the picture of the 'sun' and
repeat, "sun and bun, they sound the same which
means they rhyme!" Then sing the song again.



If I put in ...



You put in ...

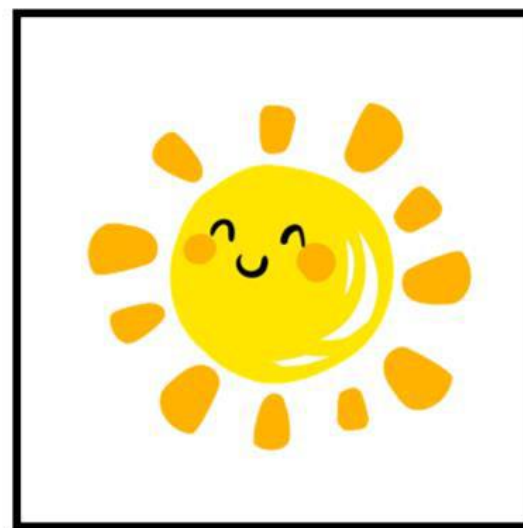


bun

If I put in ...



You put in ...

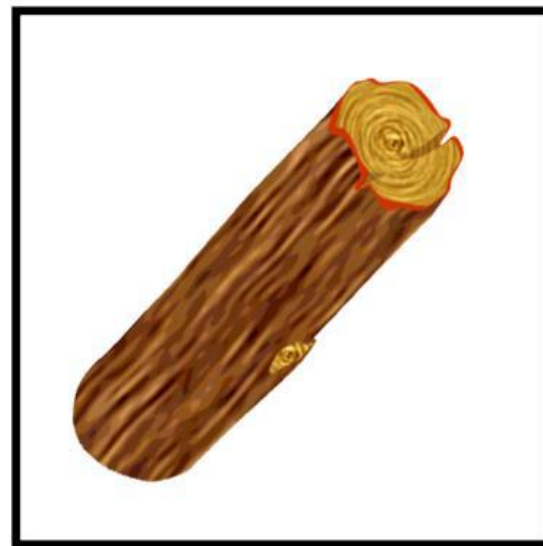


SUN

If I put in ...



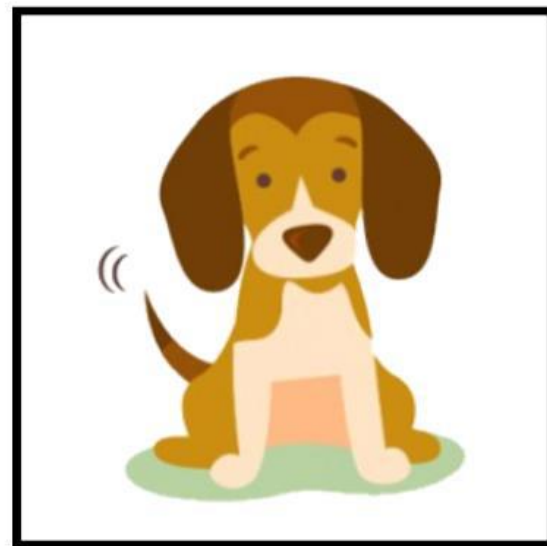
You put in ...



log

If I put in ...

You put in ...

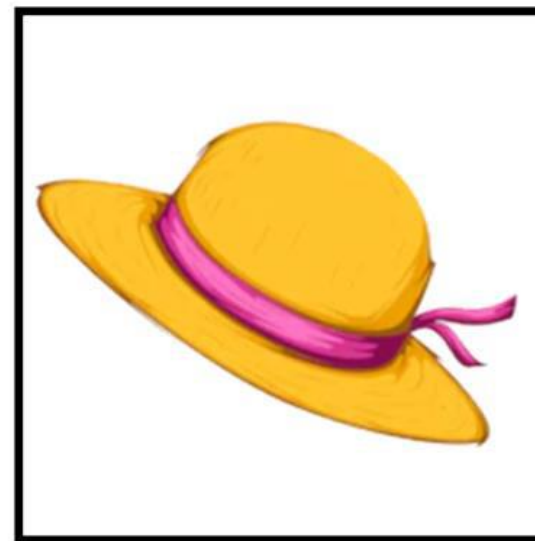


dog

If I put in ...



You put in ...

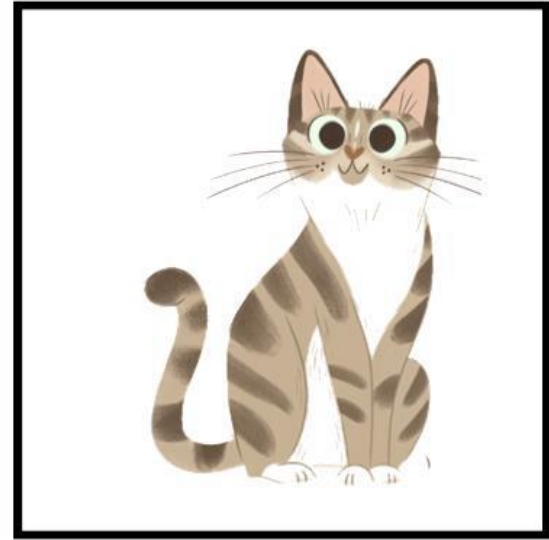


hat

If I put in ...



You put in ...

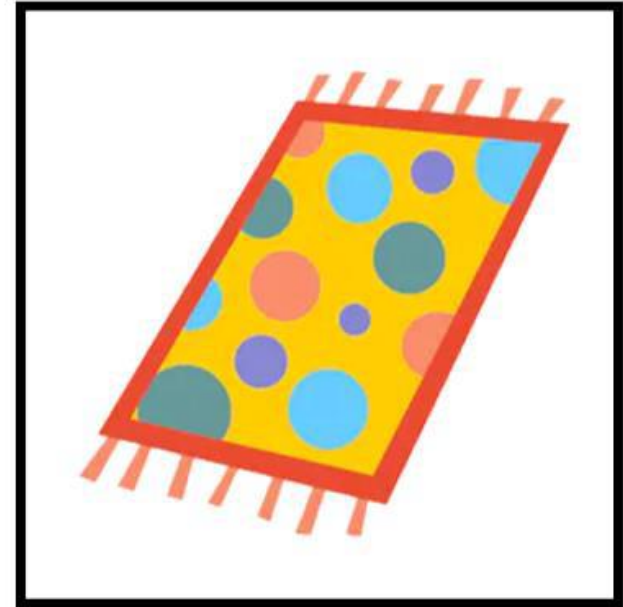


cat

If I put in ...

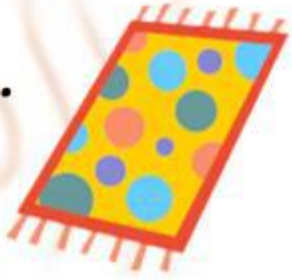


You put in ...



mat

If I put in ...



You put in ...



bat

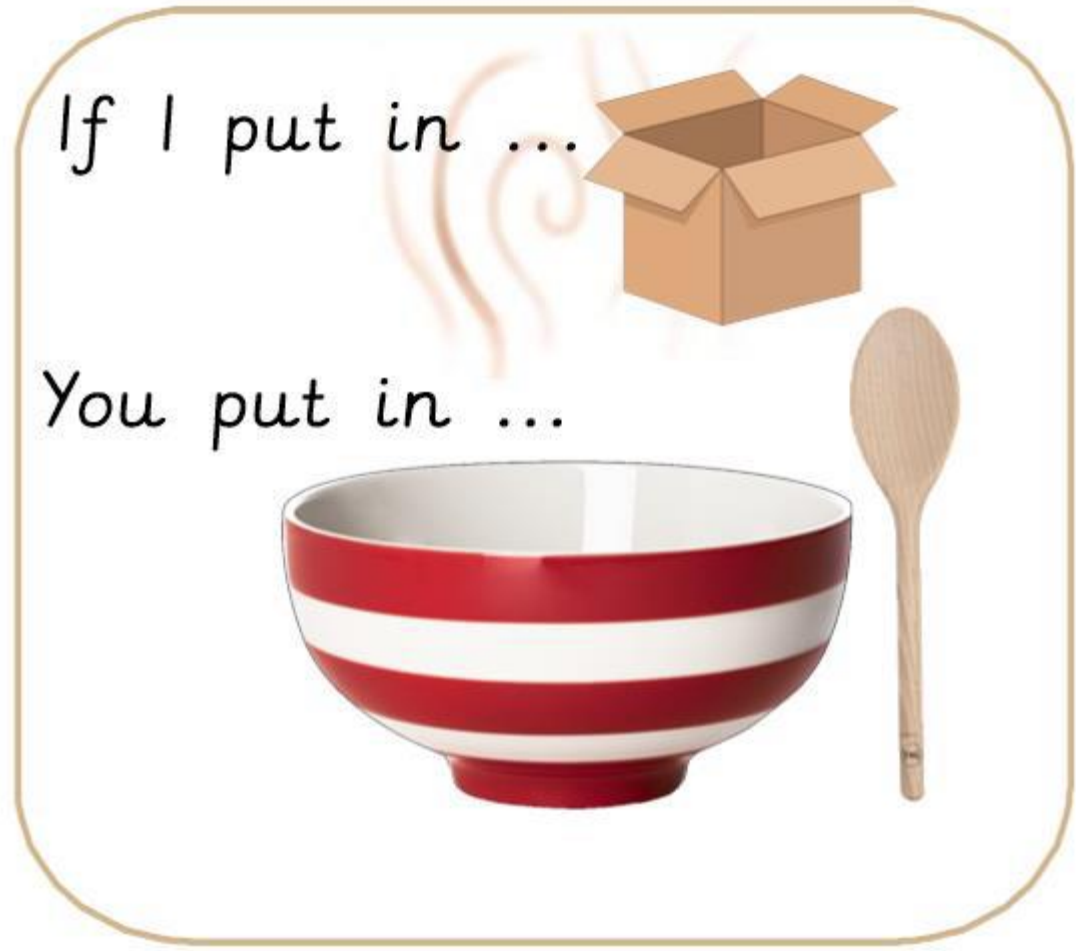
If I put in ...



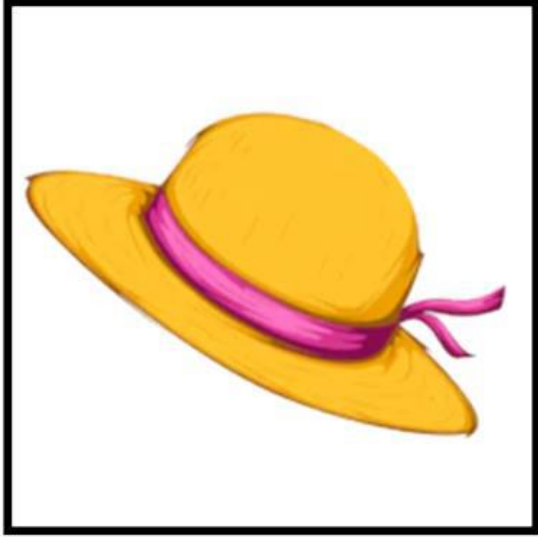
You put in ...



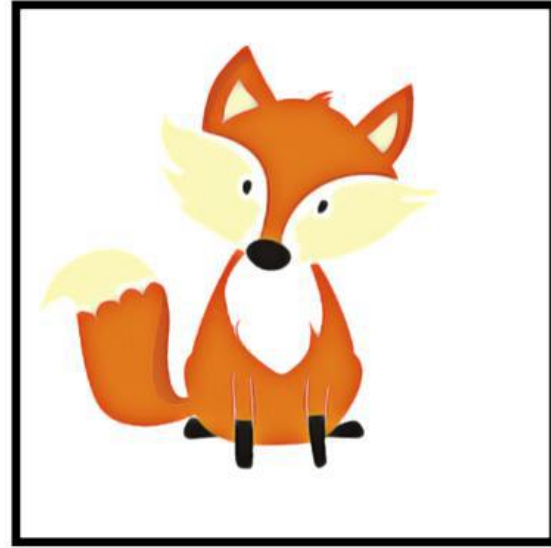
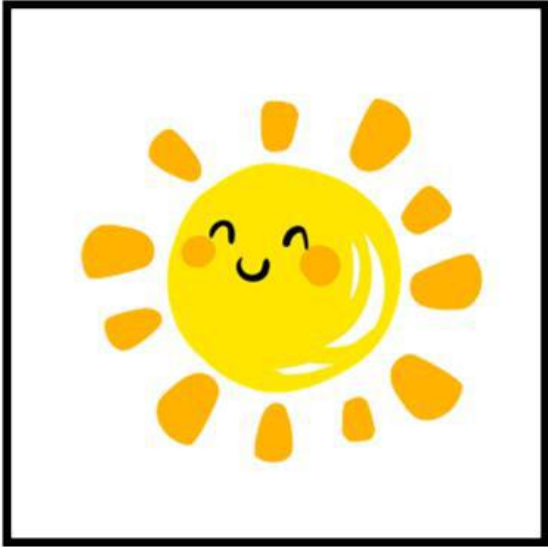
box

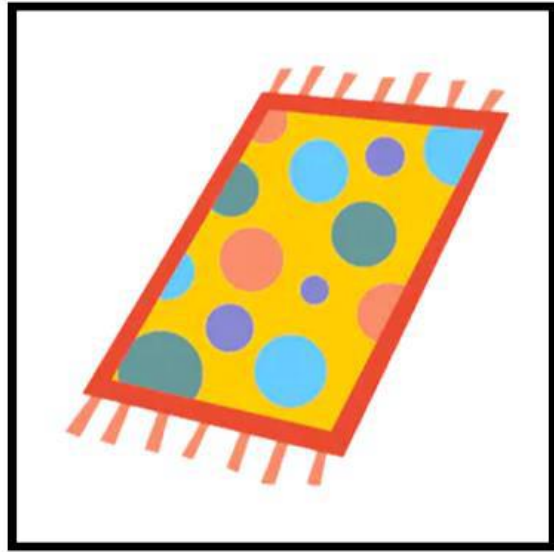


fox



Rhyming cards





Rhyming cards

